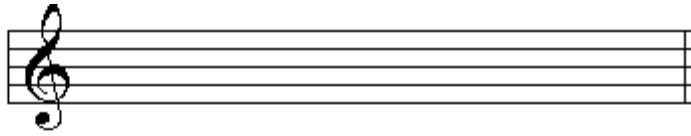
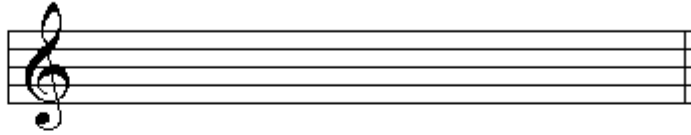


Coloca en la armadura los bemoles e indica las tonalidad: Mayor

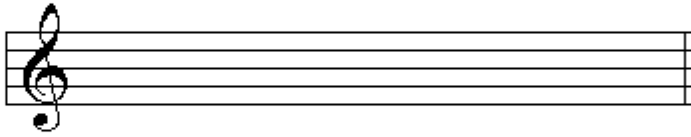
si, mi



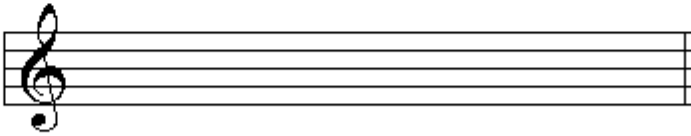
si, mi, la, re, sol



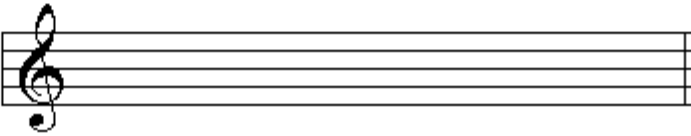
si



si, mi, la



si, mi, la, re, sol, do



Completar los compases con las figuras indicadas:

4/4 _____ 14 figuras

4/4 _____ 15 figuras

3/4 _____ 12 figuras

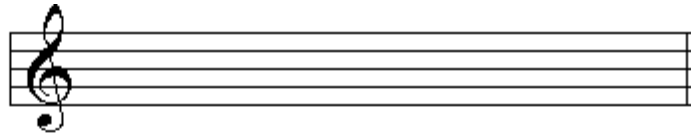
3/4 _____ 13 figuras

2/4 _____ 9 figuras

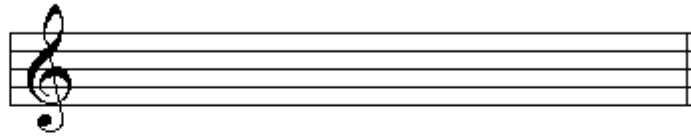
2/4 _____ 8 figuras

Colocar la armadura con sostenidos e indicar la tonalidad Mayor:

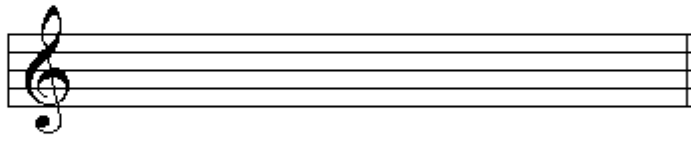
fa, do, sol



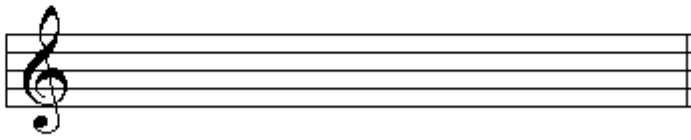
fa



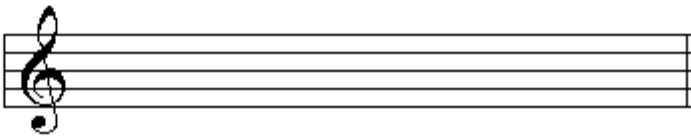
fa, do, sol, re



fa, do



fa, do, sol, re, la



Haz un intervalo: Mayor, menor o Justo, según se indica. Puede ser ascendente o descendente

2ª M 2ª M 2ª M 2ª M

2ª m 2ª m 2ª m 2ª m

3ª M 3ª M 3ª M 3ª M

3ª m 3ª m 3ª m 3ª m

4ª J 4ª J 4ª J 5ª J

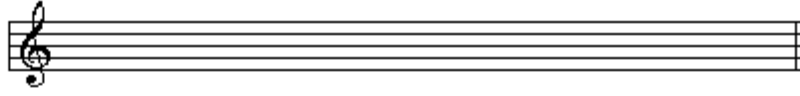
5ª J 5ª J 6ª M 6ª M

6ª M 6ª m 6ª m 7ª M

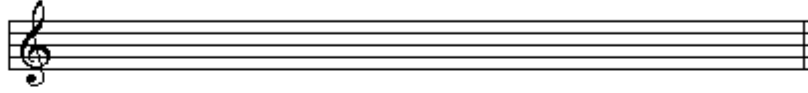
7ª M 7ª m 7ª m 8ª J

Escribe las alteraciones a las Tonalidades siguientes. Indica también el modo menor en cada una de ellas:

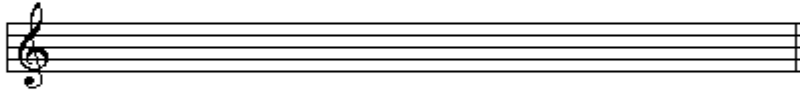
Sol Mayor



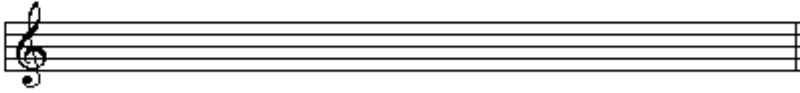
Fa # Mayor



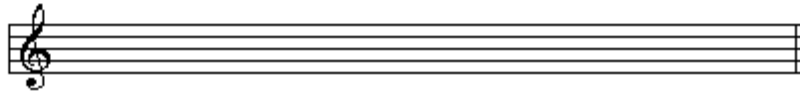
Re Mayor



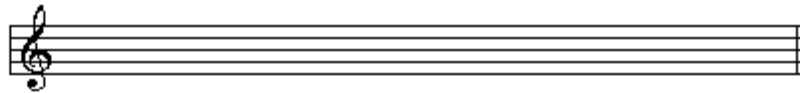
Si b Mayor



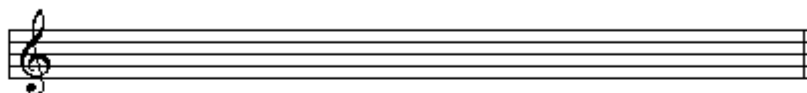
La b Mayor



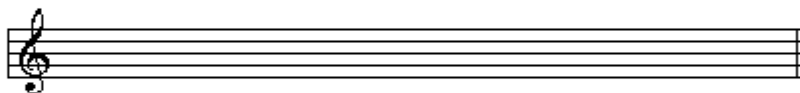
Mi b Mayor



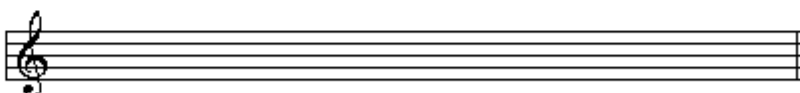
La Mayor



Re b Mayor



Si Mayor



Do # Mayor

